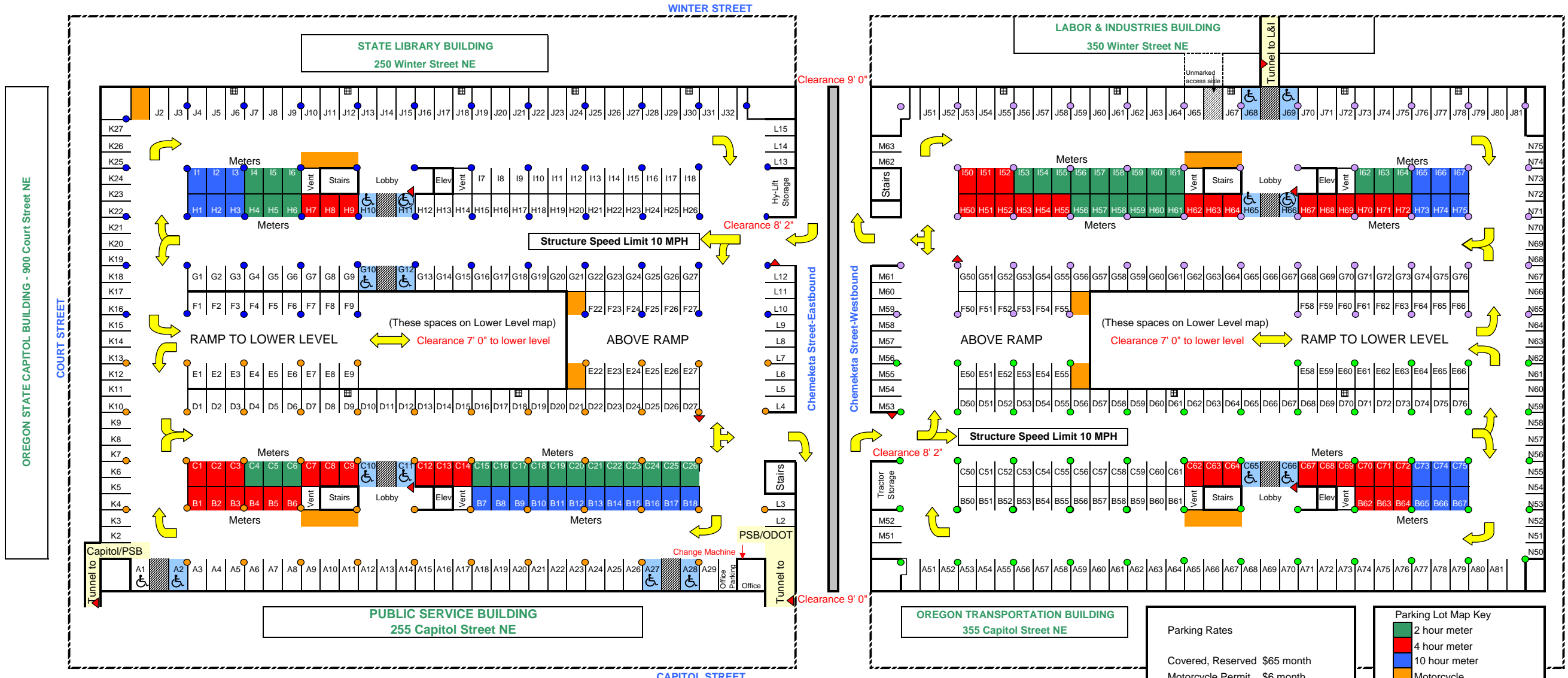
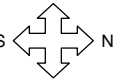


CAPITOL MALL PARKING STRUCTURE UPPER LEVEL - 444
900 Chemeketa Street NE

Parking Garage Hours: Open 5:30 AM, Close 7:00 PM



Parking Rates

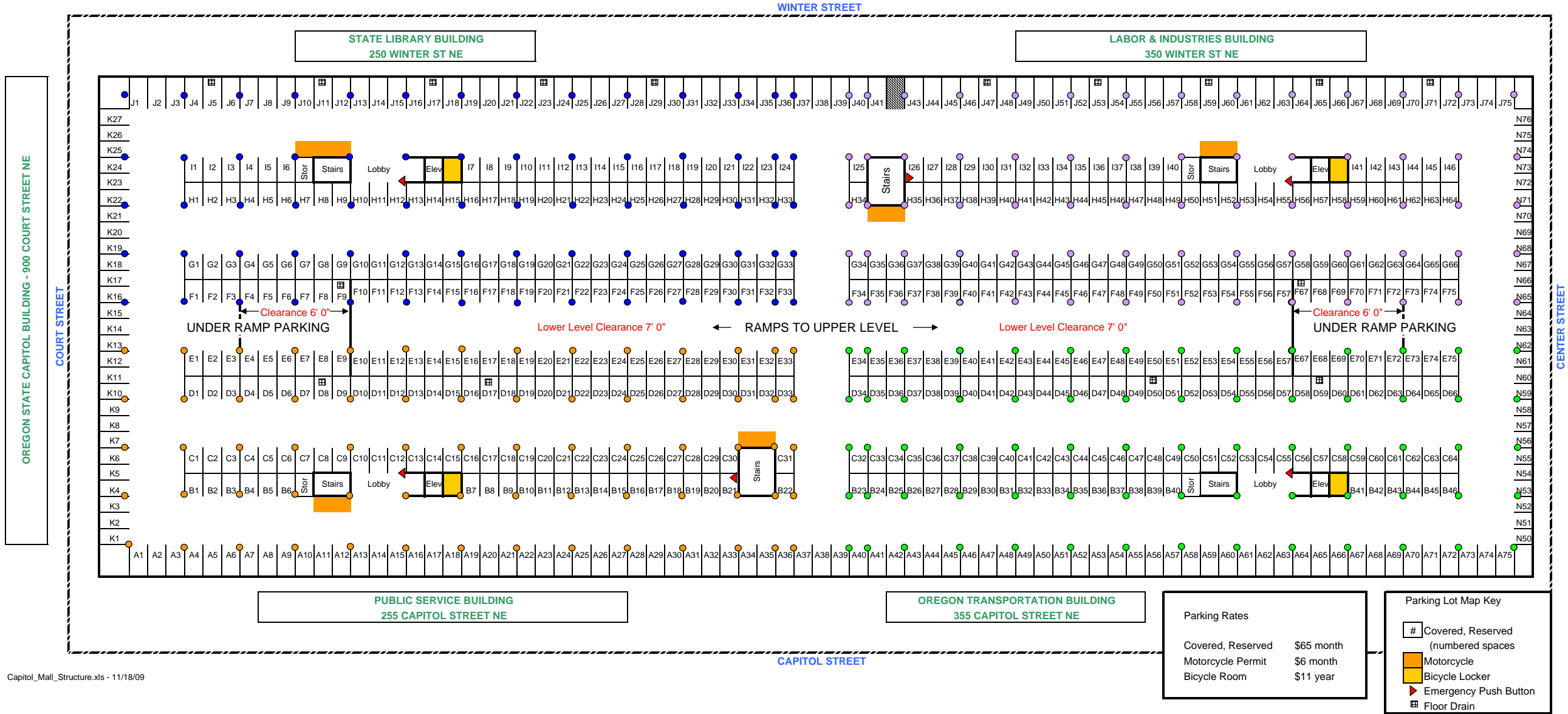
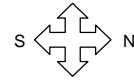
Covered, Reserved	\$65 month
Motorcycle Permit	\$6 month
Parking Meter	80¢ hour

Parking Lot Map Key

 	2 hour meter
 	4 hour meter
 	10 hour meter
 	Motorcycle
	Visitor disabled
	Wheelchair Only
	Employee disabled
 	Covered, Reserved (numbered spaces)
	Tunnels to buildings
	Emergency Push Button
	Floor Drain

**CAPITOL MALL PARKING STRUCTURE LOWER LEVEL - 555
900 Chemeketa Street NE**

Parking Garage Hours: Open 5:30 AM, Close 7:00 PM



Parking Rates

Covered, Reserved	\$65 month
Motorcycle Permit	\$6 month
Bicycle Room	\$11 year

Parking Lot Map Key

- # Covered, Reserved (numbered spaces)
- Motorcycle
- Bicycle Locker
- Emergency Push Button
- Floor Drain